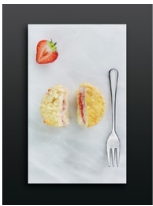




#### Always get succulent and juicy results

Your dishes are lipsmackingly brought to the next level by the 7000 SteamCrisp® Oven. It easily adds steam to usual oven heat, so that your roast come out succulent, vegetables stay juicy, and they all come out crispy.

### Product Benefits & Features



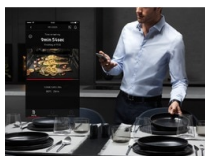
#### Steam. Your new standard for flavour

Take your dishes to the next level with the SteamCrisp oven. How? Traditional oven heat is enhanced by the introduction of steam. So not only do you get crisp and golden the outside, but thanks to the gentle flavour preserving nature of steam food is juicy, succulent and consistently tasty on the

- 71 litre oven capacity
- Inclined FloodLight™ focuses 100% on the food
- Isofront® Plus quadruple glazed door
- Fan controlled defrosting
- LED digital display
- Base heat finishing
- Food probe
- Auto safety switch off and child lock
- 'A' energy class
- Electronic Touch Controls



Thanks to the Food Sensor of this oven you can measure the core temperature from the center of your dish during the cooking process. So you get the perfect results everytime.



#### Connected Cooking for more control in the kitchen

Get your own personal assistant in the kitchen with Connected Cooking. Control the settings of your oven--including timing and temperature--from your mobile device. Get recipe inspiration and preparation tips. Or use it to check the progress of your dishes from another room.

#### Make cleaning effortless with pyrolytic cleaning

With one touch of the Pyrolytic cleaning function, dirt, grease and food residue in the oven is converted into ash that you can easily wipe off with a damp cloth.

#### Intuitive oven cooking. With the EXCite Touch Display

The EXCite Touch Display provides access to a wide variety of oven functions to suit every dish. It also makes it easy to adjust oven temperature and timings. And gives you direct feedback, and highlights the most important information.

#### Product Specification

Cleaning	Pyrolytic
Cavity coating	Grey Enamel
Dimensions (mm) (HxWxD)	594x595x567
Dimensions	590x560x550
Total electricity loading, W	3500
Voltage	240
Required Fuse	16
Frequency	50
Temperature range	30°C - 300°C
Maximum Microwave output (W)	0
Water Tank Capacity	950 ml
Cavity size	71
Largest Surface area	1424
Noise	48
Energy class	A++
Energy consumption, conventional mode, kWh per cycle	1.09
Energy consumption per EU standard cycle	0
ProdPartCode	E - Generic Partner All
Colour	Stainless Steel with antifingerprint coating
Grids type - Bottom Oven	No

